



## Great Lakes Fishery Commission

For Immediate Release  
January 23, 2026

Contact: Greg McClinchey  
226-980-9193

### **GREAT LAKES FISHERY COMMISSION AND U.S. FISH AND WILDLIFE SERVICE SEEK COMMENTS ON DRAFT ENVIRONMENTAL ASSESSMENT FOR A SEASONAL SEA LAMPREY BARRIER**

**ALGER COUNTY, MICHIGAN—**The Great Lakes Fishery Commission (Commission), in cooperation with the U.S. Fish and Wildlife Service, is seeking public comment on a draft environmental assessment regarding the construction of a seasonal sea lamprey barrier in Alger County, Michigan.

The proposed action considered in this environmental assessment is to construct and operate a seasonal in-stream sea lamprey barrier on the Sucker River in Alger County, Michigan. This would restrict invasive sea lamprey to the lower part of the river, where their offspring can be more effectively treated with lampricides. The barrier would consist of an adjustable crest weir design, allowing it to be raised during the sea lamprey spawning migration (approximately March through June) and lowered the rest of the year.

Installing this seasonal barrier approximately 20 miles upstream of the H-58 river crossing would enable effective, temporary blockage of sea lamprey during their spawning run, while preserving stream connectivity and function for non-target fish and other aquatic species throughout the watershed for the rest of the year. By reducing the area infested by sea lamprey, resources can be redirected to manage lamprey populations in other Great Lakes tributaries. This approach would also improve stream health and connectivity, supporting state, federal, and tribal fishery management goals. Once the new barrier is in place, lampricide treatments would no longer be needed for 95 miles of upstream spawning habitat. The Commission, with support from the U.S. Fish and Wildlife Service, would oversee the barrier's maintenance and operation throughout its lifespan.

This draft environmental assessment has been prepared to inform the Commission, the U.S. Fish and Wildlife Service, and the public about the potential environmental consequences of the proposed construction and operation of a sea lamprey in-stream seasonal barrier on the Sucker River, as well as the alternative of taking no action. This draft environmental assessment will also help determine whether an Environmental Impact Statement should be prepared or a Finding of No Significant Impact issued.



EST 1955 BY TREATY

Great Lakes Fishery Commission  
2200 Commonwealth Blvd, Suite 100  
Ann Arbor, MI, 48105

734.662.3209  
[glfc.org](http://glfc.org)

Learn more about the Sucker River seasonal sea lamprey barrier draft environmental assessment on the Great Lakes Fishery Commission website at [www.glfc.org/temp/2025\\_SeaLampreyBarrier\\_EA.pdf](http://www.glfc.org/temp/2025_SeaLampreyBarrier_EA.pdf)

To comment or receive a complete copy of the draft environmental assessment with the appendices included, contact Pete Hrodey.

Comments must be received by **February 22, 2026**.

For more information, contact:

Chris Freiburger  
Infrastructure Manager  
Great Lakes Fishery Commission  
(734) 649-4518  
[cfreiburger@glfc.org](mailto:cfreiburger@glfc.org)

Pete Hrodey  
Unit Supervisor, Sea Lamprey Control  
Alternative Control and Evaluation  
U.S. Fish and Wildlife Service  
(906) 869-5346 (C) | (906) 226-1225 (O)  
[pete\\_hrodey@fws.gov](mailto:pete_hrodey@fws.gov)

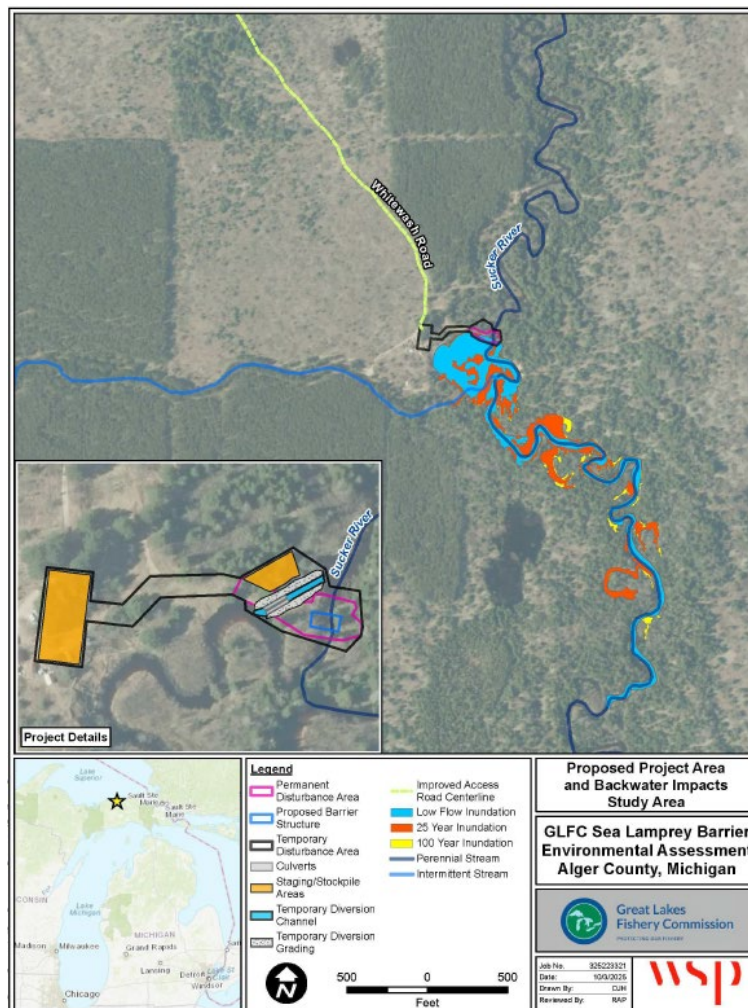


Photo: Proposed project area and backwater impacts study area. Credit: WSP



EST 1955 BY TREATY

Great Lakes Fishery Commission  
2200 Commonwealth Blvd, Suite 100  
Ann Arbor, MI, 48105

734.662.3209  
[glfc.org](http://glfc.org)

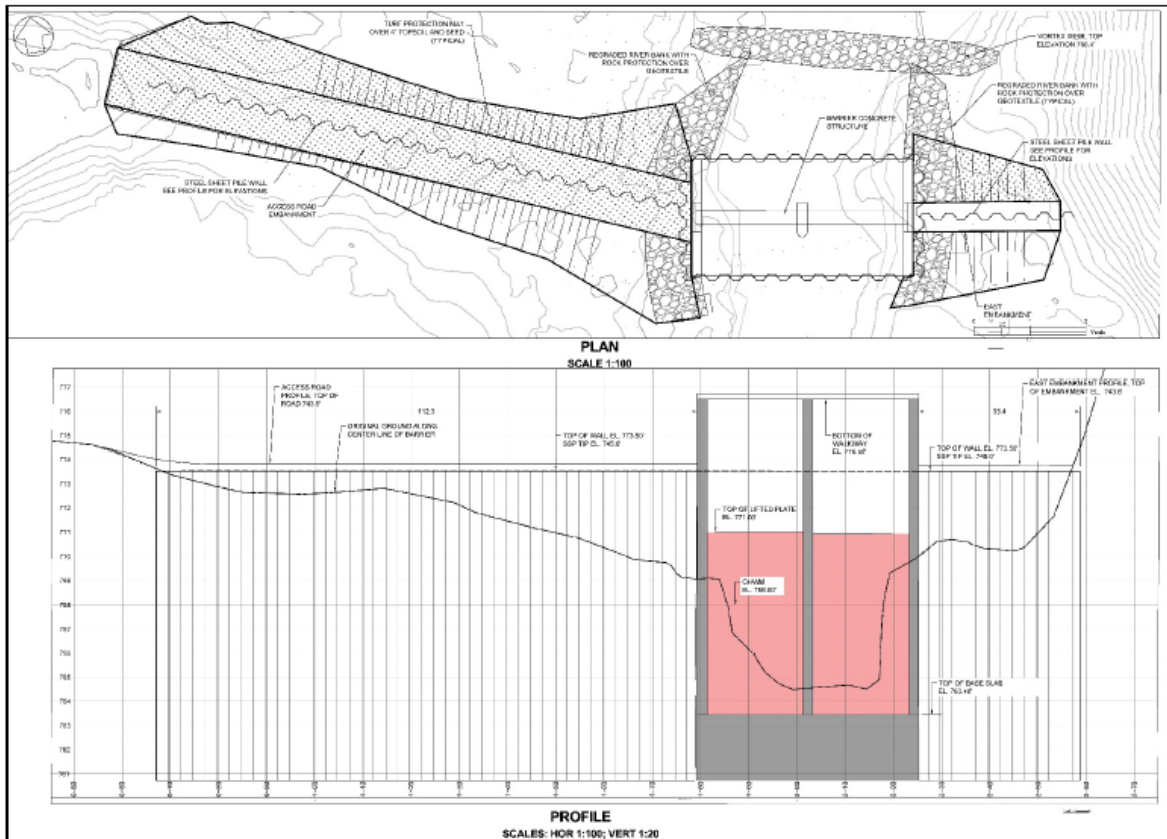


Photo: Proposed project plan and profile. Credit: Green Watershed Restoration, LLC

*The Great Lakes Fishery Commission is an international organization established by the United States and Canada through the 1954 Convention on Great Lakes Fisheries. The commission has the responsibility to promote measures that protect and improve the multi-billion-dollar Great Lakes fishery. Visit online at [www.glfc.org](http://www.glfc.org)*

