



Call for Proposals Fishery Research Program

The Great Lakes Fishery Commission is now soliciting pre-proposals and pilot project proposals for the 2021 funding cycle.

Deadline: **TUESDAY, JANUARY 15, 2020 11:59 PM EST**

- Funding schedule: <http://www.glfcc.org/for-researchers.php>. New projects may not begin before January 1, 2021.
- Individual awards are typically between \$35,000 and \$100,000 per year.

Submission

- Pre-proposal submission: <http://www.glfcc.org/proposal/login.php>.
- Pre-proposal template: <http://www.glfcc.org/pubs/pdfs/research/PreproposalFormat.doc>.
- Pilot proposal template: <http://www.glfcc.org/pubs/pdfs/research/PilotProposalformat.doc>.

Evaluation

- Proposals are evaluated for relevance and scientific merit and against information needs identified by the [Research Themes](#) under which they are submitted. Additional information and theme papers can be found here:
 - [Human Dimensions of Great Lakes Fishery Management](#)
 - [Re-establishment of Native Deepwater Fishes](#)
 - [Physical Processes and Fish Recruitment in Large Lakes](#)
 - [Energy Dynamics of Great Lakes Food Webs](#)
 - [Council of Lake Committees Research Priorities](#)
- Proposals that do not directly fit into a theme can be submitted under Non-theme Research.
- Proposals are encouraged to be cross-cutting and address multiple themes. See the [theme conceptual diagram](#) for examples of how themes may intersect.

Announcements

- The funding limit for pilot projects has **increased to \$20,000**.
- **NEW FUNDING OPPORTUNITY:** Technical Assistance for Fisheries Research. Visit <http://www.glfcc.org/for-researchers.php> for more information.

CALL FOR SPECIAL TOPICS

Human Dimensions of Great Lakes Fishery Management

The Commission is intent on advancing research in the human dimensions of Great Lakes fishery management. Priority areas of research include: economics, understanding values, and changing demographics.

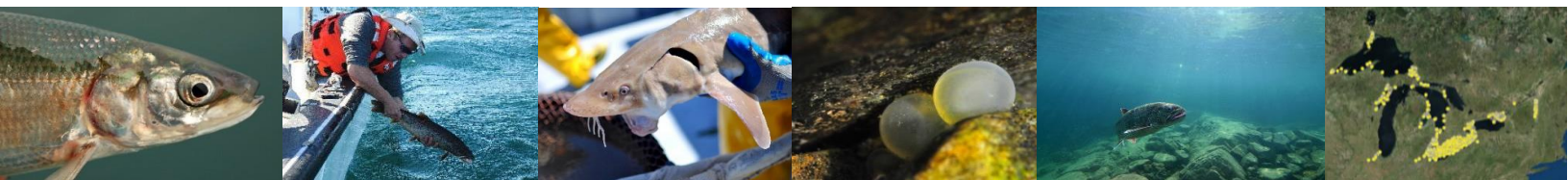
Coregonine Conservation and Restoration

Additional funds are available for projects focused on conservation and restoration of native coregonines. Proposed research must strive to improve biological understanding of native fish communities and to provide management agencies with new techniques and understanding essential for coregonine re-establishment. Projects focused on **lake whitefish** harvest (i.e., levels, policy, and control strategies) as specified in the [proceedings](#) from the February 2018 workshop sponsored by the Great Lakes Fishery Trust and the Great Lakes Fishery Commission will be given special consideration.

Great Lakes Acoustic Telemetry Observation System

Additional funds are available for projects using acoustic telemetry. Receiver networks are maintained in lakes Huron, Erie, and Michigan, as well as interconnecting waterways, and are available for use by researchers. Receivers may be available for loan and logistical and analytical support is available upon request.

For more information visit: <https://glatos.glos.us/>





Call for Proposals

Sea Lamprey Research Program

The Great Lakes Fishery Commission is now soliciting pre-proposals and pilot project proposals for the 2021 funding cycle.

Deadline: **TUESDAY, JANUARY 15, 2020 11:59 PM EST**

- Funding schedule: <http://www.glfsc.org/for-researchers.php>. New projects may not begin before January 1, 2021.
- Individual awards are typically between \$35,000 and \$100,000 per year.

Submission

- Pre-proposal submission: <http://www.glfsc.org/proposal/login.php>.
- Pre-proposal template: <http://www.glfsc.org/pubs/pdfs/research/PreproposalFormat.doc>.
- Pilot proposal template: <http://www.glfsc.org/pubs/pdfs/research/PilotProposalformat.doc>

Evaluation

- Proposals are evaluated for relevance and scientific merit and against information needs identified by the [Research Themes](#) under which they are submitted. Additional information and theme papers can be found here:

[Barriers and Trapping](#)

[Lampricides](#)

[Assessment](#)

[Chemosensory Communication Systems](#)

- Proposals that do not directly fit into a theme can be submitted under Non-theme Research.
- Proposals are encouraged to be cross-cutting and address multiple themes. See the [theme conceptual diagram](#) for examples of how themes may intersect. Researchers can use new [research synthesis papers](#) to help identify innovative research topics.
- Investigators are encouraged to use the [Sea Lamprey Control Board research priorities](#) to develop research ideas. The research priorities addressed by a proposal are considered during proposal evaluations.

Announcements

- The funding limit for pilot projects has increased to \$20,000.

CALL FOR SPECIAL TOPICS

Genetic Control

The Commission requests proposals on exploratory research to assess potential feasibility for genetic control of sea lamprey. Basic science of genetic control is a key uncertainty.

Natal Origins

The Sea Lamprey Control Board and Sea Lamprey Research Program request proposals that develop novel approaches to identifying the sources (natal origins) of sea lampreys in the Great Lakes.

Great Lakes Acoustic Telemetry Observation System

Additional funds are available for projects using acoustic telemetry. Receiver networks are maintained in lakes Huron, Erie, and Michigan, as well as interconnecting waterways, and are available for use by researchers. Receivers may be available for loan and logistical and analytical support is available upon request.

For more information visit: <https://glatos.glos.us/>

